

For three-phase asynchronous motors from 0.75 to 160 kW.

Power supply: 380-415VAC, 50/60Hz.

Plug & play solution, 7 pre-programmed function blocks cover 90% of the fan and pump applications.

Unit price (incl.VAT) in VND

| IP 20 three-phase 380...460 V drives with integrated category C3 EMC filter | | | | | | |
|---|-----|----------|--|-----------------------------------|-------------|-------------|
| Motor Power indicated on rating plate | | | Maximum continuous output current (In) (1) | Maximum transient current for 60s | Reference | Unit price |
| kW | HP | Duty (*) | A | A | | |
| 0.75 | 1 | ND | 2.2 | 2.4 | ATV610U07N4 | 27.225.000 |
| 0.37 | 0.5 | HD | 1.5 | 2.3 | | |
| 1.5 | 2 | ND | 4 | 4.4 | ATV610U15N4 | 28.594.500 |
| 0.75 | 1 | HD | 2.2 | 3.3 | | |
| 2.2 | 3 | ND | 5.6 | 6.2 | ATV610U22N4 | 28.935.500 |
| 1.5 | 2 | HD | 4 | 6 | | |
| 3 | 4 | ND | 7.2 | 7.9 | ATV610U30N4 | 30.090.500 |
| 2.2 | 3 | HD | 5.6 | 8.4 | | |
| 4 | 5 | ND | 9.3 | 10.2 | ATV610U40N4 | 31.773.500 |
| 3 | 4 | HD | 7.2 | 10.8 | | |
| 5.5 | 7.5 | ND | 12.7 | 14 | ATV610U55N4 | 34.485.000 |
| 4 | 5 | HD | 9.3 | 14 | | |
| 7.5 | 10 | ND | 15.8 | 17.4 | ATV610U75N4 | 35.728.000 |
| 5.5 | 7.5 | HD | 12.7 | 19.1 | | |
| 11 | 15 | ND | 23.5 | 25.9 | ATV610D11N4 | 40.370.000 |
| 7.5 | 10 | HD | 16.5 | 24.8 | | |
| 15 | 20 | ND | 31.7 | 34.9 | ATV610D15N4 | 43.455.500 |
| 11 | 15 | HD | 23.5 | 35.3 | | |
| 18.5 | 25 | ND | 39.2 | 43.1 | ATV610D18N4 | 54.114.500 |
| 15 | 20 | HD | 31.7 | 47.6 | | |
| 22 | 30 | ND | 46.3 | 50.9 | ATV610D22N4 | 55.550.000 |
| 18.5 | 25 | HD | 39.2 | 58.8 | | |
| 30 | 40 | ND | 61.5 | 67.7 | ATV610D30N4 | 75.542.500 |
| 22 | 30 | HD | 46.3 | 69.5 | | |
| 37 | 50 | ND | 74.5 | 82 | ATV610D37N4 | 78.672.000 |
| 30 | 40 | HD | 59.6 | 89.4 | | |
| 45 | 60 | ND | 88 | 97 | ATV610D45N4 | 85.079.500 |
| 37 | 50 | HD | 74.5 | 112 | | |
| 55 | 75 | ND | 120 | 132 | ATV610D55N4 | 128.194.000 |
| 45 | 60 | HD | 88 | 132 | | |
| 75 | 100 | ND | 145 | 160 | ATV610D75N4 | 132.176.000 |
| 55 | 75 | HD | 106 | 159 | | |
| 90 | 125 | ND | 173 | 190 | ATV610D90N4 | 142.208.000 |
| 75 | 100 | HD | 145 | 218 | | |
| 110 | 149 | ND | 211 | 232 | ATV610C11N4 | 238.782.500 |
| 90 | 125 | HD | 173 | 260 | | |
| 132 | 178 | ND | 250 | 275 | ATV610C13N4 | 252.923.000 |
| 110 | 149 | HD | 211 | 317 | | |
| 160 | 216 | ND | 302 | 332 | ATV610C16N4 | 260.804.500 |
| 132 | 178 | HD | 250 | 375 | | |

(*) Duty: HD overload up to 150% for 60 s - ND overload up to 110% for 60 s or 120% for 20 s

For three-phase asynchronous motors from 0.37kW to 22kW.

Power supply: 380-460VAC, 50/60Hz.

Output frequency range from 0.5 to 400 Hz for applications: pump, fan, conveyor, simple machines,...

Unit price (incl.VAT) in VND

Drives with heatsink - Three-phase supply voltage: 380...460 V 50/60 Hz



| Motor Power indicated on rating plate | | | Maximum continuous output current (In) (1) | Maximum transient current for 60s | Reference | Unit price |
|---------------------------------------|------|----------|--|-----------------------------------|---------------|------------|
| kW | HP | Duty (*) | A | A | | |
| 0.37 | 0.37 | 0.37 | 0.37 | 0.37 | ATV310H037N4E | 9.201.500 |
| 0.75 | 0.75 | 0.75 | 0.75 | 0.75 | ATV310H075N4E | 9.284.000 |
| 1.5 | 1.5 | 1.5 | 1.5 | 1.5 | ATV310HU15N4E | 9.955.000 |
| 2.2 | 2.2 | 2.2 | 2.2 | 2.2 | ATV310HU22N4E | 11.478.500 |
| 3 | 3 | 3 | 3 | 3 | ATV310HU30N4E | 13.486.000 |
| 4 | 4 | 4 | 4 | 4 | ATV310HU40N4E | 13.821.500 |
| 5.5 | 5.5 | 5.5 | 5.5 | 5.5 | ATV310HU55N | 17.110.500 |
| 7.5 | 7.5 | 7.5 | 7.5 | 7.5 | ATV310HU75N | 20.311.500 |
| 11 | 11 | 11 | 11 | 11 | ATV310HD11N | 25.162.500 |
| 15 | 15 | 15 | 15 | 15 | ATV310HD15N | 35.046.000 |
| 18.5 | 18.5 | 18.5 | 18.5 | 18.5 | ATV310HD18N | 36.448.500 |
| 22 | 22 | 22 | 22 | 22 | ATV310HD22N | 41.805.500 |

(*) Duty: HD overload up to 150% for 60 s - ND overload up to 110% for 60 s

Altivar Machine- Altivar 320

Increase the effectiveness of machines



Altivar 320 ComPact
designed for machine
body integration



Altivar 320 Book
designed for optimized
cabinet usage



Example of GV2/ATV320 direct mounting in an enclosure:
GV2L circuit-breakers + GV2454 and GV2G05 accessories
+ ATV320U18N4B drives

Altivar 320, part of the new Altivar™ Machine range, has a number of out-of-the-box features. Its powerful combination of safety, reliability, and simplicity make it a versatile choice that reduces costs both during installation as well as throughout the machine's life cycle.

Unprecedented flexibility

Simplified installation thanks to the availability of two form factors, ComPact and book, that allow efficient space usage in various cabinet layouts despite mechanical constraints.

- Advanced connectivity via many networks that are based on Ethernet (Modbus TCP, Ethernet/IP, Profinet, EtherCAT) or serial (Modbus RTU, CANopen, Profibus DP, DeviceNet).

Improved machine performance

- Reliable motor control for asynchronous and synchronous motors, delivering leading-edge performance with simple, plug-and-play commissioning.
- Integrated control system functions featuring ATV Logic can be used to perform simple operations without adding further devices, which reduces costs.

Extended machine availability

- Continuous machine operation as a result of robust design. Printed circuit boards are class 3C3 coated in accordance with IEC 61721-3-3 to protect against corrosion in harsh environments. The drive maintains a thermal state allowing uninterrupted operation with ambient temperatures up to 60°C.

Optimal machine safety

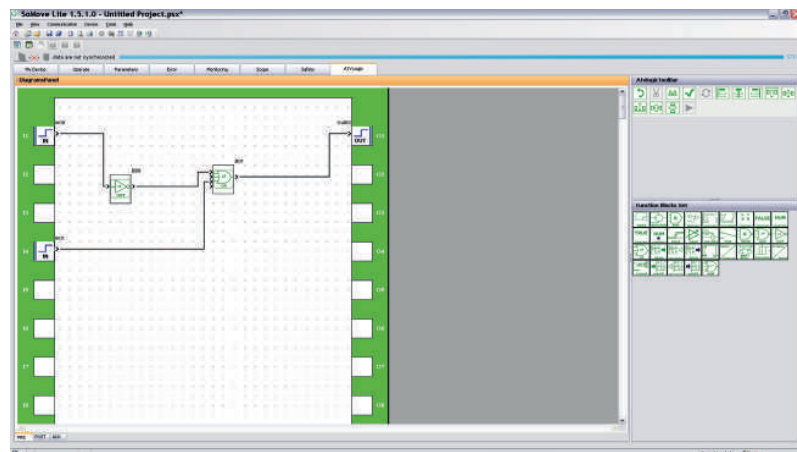
- Comprehensive embedded safety solutions for simple application requirements, from STO (Safe Torque Off) to full monitoring functionalities**, comply with Machinery Directive 2006/42/EC and simplify certification.

** SS1: Safe Stop 1

SLS: Safe Limited Speed

SMS: Safe Maximum Speed

GDL: Guard Door Locking



ATV Logic - Easy programming language with function block diagram (FBD) under SoMove software



Altivar Machine ATV340 Drives

Latest Innovations
with up-to-date
technology

Modular drives from 0.75 kW to 22 kW
Ethernet drives from 0.75 kW to 75 kW

Altivar Machine- Altivar 340

Stay on top of the smart machine era

Designed for optimized installation, the Altivar™ Machine ATV340 drive offers cutting-edge application control and advanced, easy-to-integrate automation capabilities. Its innovative features make it the drive of choice for OEMs entering – and rising to the challenges of — the smart machine era.

220%

Nominal torque

Superior machine performance

With a maximum torque availability of 1.8 In and optimized speed bandwidth of up to 400 Hz, the ATV340 is ideal for dynamic applications with rapid acceleration. Its frequency inverters can handle high overloads in demanding applications up to 220% nominal torque.

1ms

Application
cycle time

Faster reaction time

A combination of fast application reaction time with a minimum 1 ms task cycle and Ethernet connectivity maximizes your machine's throughput.



Packaging

Simplified machine engineering

Built-in multiprotocol Ethernet, a variety of interfaces, an embedded encoder, and integrated application functions offer maximum flexibility in design. Adaptable and scalable, the ATV340 is compatible with a variety of asynchronous, synchronous and reluctance motors.

Deployed in
various
applications
including:



**Material
handling**

Comprehensive functional safety and security

With embedded STO (SIL3) and a full range of safety functions, the ATV340 is compliant with machine related safety standards EN ISO 13849-1 and EN 62061. The ATV340 also has Achilles level 2 cyber-security certification to protect people and assets while ensuring continuity of service.



**Material
working**

Sustainable productivity

The ATV340 extends machine availability in harsh environments with high levels of dust and vibration and operating temperatures up to 60°C. Remote monitoring via the embedded web server enable predictive maintenance while the MachineStruxure™ Faulty Device Replacement service allows fast machine recovery.



Hoisting

Process Drives

Altivar Process ATV600

Altivar Process ATV900



Altivar Process is a Services Oriented Drive designed to reduce OPEX in Process & Utilities installations, thanks to embedded digital services.

> **ATV600**: drives focused on fluid management processing and energy saving.

> **ATV900**: drives focused on maximum productivity with exceptional motor control and connectivity capabilities.

Wall-mounting drives, floor-standing and built-in cabinet, solutions are available with **IP21, IP23, IP54, and IP55** protection degrees, according to customer requirements.

Altivar Process is the first Services Oriented Drive with:

- Embedded Power measurement and Energy dashboard.
- Embedded process monitoring and control.
- Low Harmonics (THDi < 48% at 80% load or THDi < 5% with low harmonic offer)
- Stop and Go function to reduce energy consumption in standby mode.
- Asset monitoring and protection.
- Drift monitoring.
- Easy maintenance via a Dynamic QR-Code.
- Seamless integration with embedded Ethernet:
 - From device to process control with the Smart Process Object
 - From data to insights with the embedded Web Server

Custom Engineered Drives:

- Proven technical cooling and harmonics solutions.
- Modular and ComPact design.
- Easy grid integration.
- Embedded Control (PLC, RTU, HMI)
- A full set of control options.
- Fully load tested in a controlled laboratory environment.
- Complies with industry standards.



Remote graphic display terminal (example shows dynamic pump operation in relation to its optimum operation)



Detected fault: the screen's red backlight is activated automatically



Scanning the QR code from a smartphone or tablet



SoMove setup software with Modbus-Bluetooth adaptor for PC

Altivar Process ATV6000

Medium voltage variable speed drive from 2.4 to 13.8 and 0.3 to 20 MW



A smart, connected drive system which helps optimize your business through process optimization, energy management improvements and asset management

Features

The Altivar™ Process ATV6000 services-oriented drive completes the Altivar Process range with a solution to address your medium voltage operation and maintenance challenges

Services-oriented drives

Improved operator efficiency with

- Easy access by QR code for online and remote support
- Comfortable usability with the connected 10" Magelis HMI screen, also supported by storage oscilloscope function
- Real-time intelligence enabled by native ethernet and embedded webserver

Fast and easy on-site maintenance operation with

- WellHoroven LV IGBT design
- Modular architecture
- Easy front access design

With Digital services, ATV6000 manages the integrity of your equipment, your finances (OpEx and CapEx), and the performance of your production by

- Continuous monitoring on critical asset health and level of stress
- 360° diagnostics on risk assessment, with report and analysis
- Risk mitigation plan with anticipated actions to take
- Access to 24/7 Schneider Electric service assistance

up to
20%*

Improved productivity

up to
30%*

Reduced energy
consumption

up to
20%*

Reduced downtime

* Based on previous data.

This is not a guarantee of future performance or performance in your particular circumstance

Energy Management to help you optimize and reduce your energy consumption thanks to:

- Embedded power management with < 5% measurement accuracy
- Best Efficiency Point function for pumps
- Lifetime monitoring on energy usage and inbuilt energy dashboard
- Phase shifted transformer for highly reduced THDi input on grid
- Integrated transformer with galvanic insulation feature
- Low dV/dt inverter providing power without high over-voltage at motor side

Process Optimization

- Cellby pass feature
- N+1 and N+2 power cell design for redundancy
- Best Efficiency Point function for pumps
- Solid and easily deployed Tested and validated applicative architecture (TVDA)
- Fully compatibility with Schneider Electric EcoStruxure Process Automation Systems (hybrid & DCS systems)
- Super sensor capabilities for predictive maintenance planning
- Dedicated applicative control (droop control, fan/pump function etc)

Tailored Solution

- Application experts provide optimized engineering solution for operational efficiency and investment optimization
- Design process is simplified and system implementation time is shortened
- High level of customization to fit to purpose

Benefits

- Tailored solutions to optimize your operation efficiency and investment
- Optimized usage of energy and reduce consumption
- Reduced downtime and improve uptime
- Minimized Total Cost of Ownership & increase profitability
- Improved productivity & availability

Applications

MMM

Overland conveyor, Single/multi flat conveyor, Transfer conveyor, Belt conveyor, High Pressure Grinding Roller, SAG/Ball mill, Vertical roller Mill, Jaw crusher mill, Sintering/De-dusting/ID fan, Mill fan, Blast Furnace, Slurry pump, Rotary kiln

WWW

Natural spring/well/pump, Electro submersible pump, Raw water intake pump, Lifting station, High pressure pump, Air blower/compressor, Booster pump, Multi-pump station, Distribution pump.

O&G

Electric submersible pump, Crude oil transfer pump, injection pump, FPSO pumps/compressors, LNG compressor, Gas booster compressor, Load commute inverter retrofit (compressors), Petrochemical fan/pump, Extruder, Mixer, Blower

Power plants

Coal belt conveyor, Coal mill, Oil pump, Boiler feed-water pump, Cooling water circulation pump, Primary/Secondary draft fan/ ID fan, Cooling water fan, Condense water pump, Fuel gas booster compressor, Boiler (HRSG)

Altivar 12 (Drives with heatsink)
 For asynchronous motors from 0.18kW to 4kW
 Power supply: 100-240V, 50/60Hz
 Output frequency range from 0 to 400 Hz
 Application: Ventilation, conveyor, packaging ...

Biến tần ATV12 (đã bao gồm đế tản nhiệt)
 Dùng cho động cơ không đồng bộ từ 0.18kW đến 4kW
 Nguồn điện áp: 100-240V, 50/60Hz
 Dải tần số ngõ ra từ 0 đến 400 Hz
 Ứng dụng: Quạt thông gió, băng tải, máy đóng gói

Unit price (incl.VAT) in VND

Drives with heatsink (frequency range from 0 to 400Hz)

Single-phase supply voltage: 100...120V 50/60Hz



ATV12H018F1

| Motor Power indicated on plate (1) | | Reference | Unit Price |
|------------------------------------|------|-------------|------------|
| kW | HP | | |
| 0.18 | 0.25 | ATV12H018F1 | 8.596.500 |
| 0.37 | 0.5 | ATV12H037F1 | 9.361.000 |
| 0.75 | 1 | ATV12H075F1 | 14.454.000 |



ATV12H055M2

Single-phase supply voltage 200...240V 50/60Hz

| Motor Power indicated on plate (1) | | Reference | Unit Price |
|------------------------------------|------|-------------|------------|
| kW | HP | | |
| 0.18 | 0.25 | ATV12H018M2 | 6.693.500 |
| 0.37 | 0.55 | ATV12H037M2 | 6.891.500 |
| 0.55 | 0.75 | ATV12H055M2 | 6.968.500 |
| 0.75 | 1 | ATV12H075M2 | 7.634.000 |
| 1.5 | 2 | ATV12HU15M2 | 9.922.000 |
| 2.2 | 3 | ATV12HU22M2 | 11.099.000 |



ATV12HU40M3

Three-phase supply voltage 200...240V 50/60Hz

| Motor Power indicated on plate (1) | | Reference | Unit Price |
|------------------------------------|------|-------------|------------|
| kW | HP | | |
| 0.18 | 0.25 | ATV12H018M3 | 7.067.500 |
| 0.37 | 0.55 | ATV12H037M3 | 7.150.000 |
| 0.75 | 1 | ATV12H075M3 | 9.168.500 |
| 1.5 | 2 | ATV12HU15M3 | 11.269.500 |
| 2.2 | 3 | ATV12HU22M3 | 11.990.000 |
| 3 | - | ATV12HU30M3 | 13.739.000 |
| 4 | 5 | ATV12HU40M3 | 15.845.500 |

(1) These values are given for a nominal switching frequency of 4 kHz, for use in continuous operation.
 If operation above 4 kHz needs to be continuous, the nominal drive current should be derated by 10% for 8 kHz, 20% for 12 kHz and 30% for 16 kHz.
 The switching frequency can be set between 2 and 16 kHz for all ratings.
 See the derating curves in the User Manual, available on our website at "www.schneider-electric.com".

Altivar 12 (Accessories)
 For asynchronous motors from 0.18kW to 4kW
 Power supply: 100-240V, 50/60Hz
 Output frequency range from 0 to 400 Hz
 Application: Ventilation, conveyor, packaging ...

Biến tần ATV 12 - (Phụ kiện)
 Dùng cho động cơ không đồng bộ từ 0.18 đến 4kW
 Nguồn điện áp: 100-240V, 50/60Hz
 Dải tần số ngõ ra từ 0 đến 400Hz
 Ứng dụng: Quạt thông gió, băng tải, máy đóng gói

Unit price (incl.VAT) in VND

Altivar 12 - Accessories



Multi-Loader configuration tools and associated cable

| Item | For drives | Reference | Unit Price |
|--|-------------|-----------|------------|
| Multi-Loader tool For copying a configuration on a PC or drive and duplicating it on another drive. The drives do not need to be powered-up | ATV12*..... | VW3A8121 | 41.046.500 |



Remote display terminals and associated cordsets

| Item | Description | Reference | Unit Price |
|--|-------------|-------------|------------|
| Remote display terminals A remote-mounting cordset VW3A1104R** is also required. | IP54 | VW3A1006 | 3.399.000 |
| | IP65 | VW3A1007 | 4.268.000 |
| Remote-mounting cordsets For connecting the VW3A006 or VW3A1007 remote display terminal to the Altivar 12 drive. | L=1m | VW3A1104R10 | 759.000 |
| | L=3m | VW3A1104R30 | 869.000 |



Braking unit and resistors

| Item | For drives | Reference | Unit Price |
|---|----------------------------|-----------|------------|
| Braking resistors Unprotected (IP 00) If a resistor other than those specified is being used, add a thermal protection device. | ATV 12 H018M2...HU15M2 | VW3A7701 | 5.082.000 |
| | H018M3...HU15M3 | | |
| | ATV12HU22M2 ATV12HU22M3 | VW3A7702 | 6.666.000 |
| Braking resistors Unprotected (IP 00) If a resistor other than those specified is being used, add a thermal protection device. | ATV 12 H018M2...HU15M2 | VW3A7723 | 7.100.500 |
| | H018M3...HU15M3 | | |
| | ATV12HU22M2 ATV12HU22M3 | VW3A7724 | 9.174.000 |



Additional EMC input filters

| Item | For drives | Reference | Unit Price |
|--|----------------------------|-----------|------------|
| Additional EMC input filters For compliance with the requirements of standard IEC/EN 61 800-3, category C1, C2 or C3, in Environment 1 (public network) or 2 (industrial network) depending on the drive rating. | ATV 12 H018F1...H037F1 | VW3A4416 | 5.769.500 |
| | H018M2...H075M2 | | |
| | ATV 12 H075F1 | VW3A4417 | 18.595.500 |
| | HU15M2...HU22M2 | | |
| | ATV 12 H018M3... H075M3 | VW3A4418 | 12.364.000 |

Control of both three-phase asynchronous and synchronous motors from 0.18 to 15 kW
 Output frequency: 0.1... 599 Hz
 Overload torque performance up to 200% Tn in an open loop
 ATV Logic integration (up to 50 function blocks)
 Numerous application functions and embedded safety functions for targeted application segments: Material handling, Packaging, Textiles, Hoisting, Mechanical actuators, Material working,...

Điều khiển động cơ đồng bộ và không đồng bộ 3 pha công suất từ 0.18 đến 15 kW
 Tần số ngõ ra: 0.1... 599 Hz
 Khả năng quá tải khi điều khiển vòng hở lên đến 200% momen định mức
 Tích hợp sẵn chức năng ATV Logic (có thể lập trình lên đến 50 khối chức năng)
 Nhiều chức năng ứng dụng và tích hợp sẵn các chức năng an toàn cho các máy: vận chuyển vật liệu, đóng gói, máy dệt, cầu trục, truyền động cơ học, máy chế biến vật liệu,...

Unit price (incl.VAT) in VND

Drives with ComPact control block

| Motor | | Line supply | | | Altivar Machine ATV320 | |
|--|------|---------------------------|------------|-------------------------------------|------------------------|------------|
| Power indicated on rating plate motor (1) kW HP | | Max. Line current (2) (3) | | Max. prospective line Isc (4) kA | Reference (1) | Unit Price |
| | | at U1 A | at U2 A | | | |
| Single-phase supply voltage: 200...240 V 50/60 Hz, with integrated EMC filter (3) (5) (6) | | | | | | |
| 0.18 | 0.25 | 3.4 | 2.8 | 1 | ATV320U02M2C | 9.383.000 |
| 0.37 | 0.5 | 5.9 | 4.9 | 1 | ATV320U04M2C | 9.498.500 |
| 0.55 | 0.75 | 7.9 | 6.6 | 1 | ATV320U06M2C | 10.609.500 |
| 0.75 | 1 | 10 | 8.4 | 1 | ATV320U07M2C | 10.923.000 |
| 1.1 | 1.5 | 13.8 | 11.6 | 1 | ATV320U11M2C | 12.804.000 |
| 1.5 | 2 | 17.8 | 14.9 | 1 | ATV320U15M2C | 12.171.500 |
| 2.2 | 3 | 24 | 20.2 | 1 | ATV320U22M2C | 13.040.500 |
| Three-phase supply voltage: 200...240 V 50/60 Hz, without integrated EMC filter (3) | | | | | | |
| 0.18 | 0.25 | 2 | 1.7 | 5 | ATV320U02M3C | 10.087.000 |
| 0.37 | 0.5 | 3.6 | 3 | 5 | ATV320U04M3C | 10.219.000 |
| 0.55 | 0.75 | 4.9 | 4.2 | 5 | ATV320U06M3C | 10.670.000 |
| 0.75 | 1 | 6.3 | 5.3 | 5 | ATV320U07M3C | 11.385.000 |
| 1.1 | 1.5 | 8.6 | 7.2 | 5 | ATV320U11M3C | 12.149.500 |
| 1.5 | 2 | 11.1 | 9.3 | 5 | ATV320U15M3C | 12.534.500 |
| 2.2 | 3 | 14.9 | 12.5 | 5 | ATV320U22M3C | 13.370.500 |
| 3 | 4 | 19 | 15.9 | 5 | ATV320U30M3C | 15.966.500 |
| 4 | 5 | 23.8 | 19.9 | 5 | ATV320U40M3C | 17.759.500 |
| 5.5 | 7.5 | 35.4 | 29.8 | 22 | ATV320U55M3C | 22.027.500 |
| 7.5 | 10 | 45.3 | 38.2 | 22 | ATV320U75M3C | 27.533.000 |
| 11 | 15 | 60.9 | 51.4 | 22 | ATV320D11M3C | 37.130.500 |
| 15 | 20 | 79.7 | 67.1 | 22 | ATV320D15M3C | 42.190.500 |
| Three-phase supply voltage: 380...500 V 50/60 Hz, with integrated EMC filter (3) (5) (6) | | | | | | |
| 0.37 | 0.5 | 2.1 | 1.6 | 5 | ATV320U04N4C | 12.309.000 |
| 0.55 | 0.75 | 2.8 | 2.2 | 5 | ATV320U06N4C | 12.457.500 |
| 0.75 | 1 | 3.6 | 2.8 | 5 | ATV320U07N4C | 12.578.500 |
| 1.1 | 1.5 | 5 | 3.8 | 5 | ATV320U11N4C | 12.798.500 |
| 1.5 | 2 | 6.4 | 4.9 | 5 | ATV320U15N4C | 13.079.000 |
| 2.2 | 3 | 8.7 | 6.6 | 5 | ATV320U22N4C | 14.162.500 |
| 3 | 4 | 11.1 | 8.4 | 5 | ATV320U30N4C | 14.349.500 |
| 4 | 5 | 13.7 | 10.6 | 5 | ATV320U40N4C | 15.587.000 |
| 5.5 | 7.5 | 20.7 | 14.5 | 5 | ATV320U55N4C | 21.950.500 |
| 7.5 | 10 | 26.5 | 18.7 | 22 | ATV320U75N4C | 23.457.500 |
| 11 | 15 | 36.6 | 25.6 | 22 | ATV320D11N4C | 29.656.000 |
| 15 | 20 | 47.3 | 33.3 | 22 | ATV320D15N4C | 31.086.000 |



ATV320U02M2C...U07M2C



ATV320U11M2C...U22M2C
ATV320U04N4C...U15N4C



ATV320U22N4C...
ATV320U40N4C



ATV320U55M3C

(1) These values are given for a nominal switching frequency of 4 kHz, for use in continuous operation. The switching frequency is adjustable from 2 to 16 kHz. Above 4 kHz, derate the nominal drive current. The nominal motor current should not exceed this value
 (2) Typical value for a 4-pole motor and a maximum switching frequency of 4 kHz, with no line choke for max. prospective line Isc (4).
 (3) Nominal supply voltage, min. U1, max. U2: 200 (U1)...240 V(U2), 380(U1)...500 V(U2).
 (4) If line Isc is greater than the values in the table, add line chokes.
 (5) Drives supplied with category C2 integrated EMC filter: This filter can be disconnected.
 (6) Drives are supplied with an EMC plate, for assembly by the customer.

External options:

- Braking resistors
- Line chokes
- Motor chokes
- Additional EMC filters
- Adapter extension module for compact control block drive
- Speed monitoring module

Optional communication modules:

- Modbus/TCP- Ethernet/IP
- PROFIBUS DP V1
- DeviceNet
- EtherCAT
- POWERLINK
- ProfiNet

Control of both three-phase asynchronous and synchronous motors from 0.18 to 15 kW
 Output frequency: 0.1...599 Hz
 Overload torque performance up to 200% Tn in an open loop
 ATV Logic integration (up to 50 function blocks)
 Numerous application functions and embedded safety functions for targeted application segments: Material handling, Packaging, Textiles, Hoisting, Mechanical actuators, Material working,...

Điều khiển động cơ đồng bộ và không đồng bộ 3 pha công suất từ 0.18 đến 15 kW
 Tần số ngõ ra: 0.1... 599 Hz
 Khả năng quá tải khi điều khiển vòng hở lên đến 200% momen định mức
 Tích hợp sẵn chức năng ATV Logic (có thể lập trình lên đến 50 khối chức năng)
 Nhiều chức năng ứng dụng và tích hợp sẵn các chức năng an toàn cho các máy: vận chuyển vật liệu, đóng gói, máy dệt, cầu trục, truyền động cơ học, máy chế biến vật liệu,...

Unit price (incl.VAT) in VND

Drives with book control block

| Motor Power indicated on rating plate motor (1) kW HP | Line supply | | Max. prospective line Isc (4) kA | Altivar Machine ATV320 Reference (1) | Unit Price |
|--|---|------------|--|---|------------|
| | Max. Line current (2) (3) at U1 A | at U2 A | | | |
| Single-phase supply voltage: 200...240 V 50/60 Hz, with integrated EMC filter (3) (5) (6) | | | | | |
| 0.18 0.25 | 3.4 | 28 | 1 | ATV320U02M2B | 12.265.000 |
| 0.37 0.5 | 6 | 5 | 1 | ATV320U04M2B | 13.112.000 |
| 0.55 0.75 | 7.9 | 6.7 | 1 | ATV320U06M2B | 13.728.000 |
| 0.75 1 | 10.1 | 8.5 | 1 | ATV320U07M2B | 13.904.000 |
| 1.1 1.5 | 13.6 | 11.5 | 1 | ATV320U11M2B | 14.014.000 |
| 1.5 2 | 17.6 | 14.8 | 1 | ATV320U15M2B | 14.261.500 |
| 2.2 3 | 23.9 | 20.1 | 1 | ATV320U22M2B | 14.580.500 |
| Three-phase supply voltage: 380...500 V 50/60 Hz, with integrated EMC filter (3) (5) (6) | | | | | |
| 0.37 0.5 | 2.1 | 1.6 | 5 | ATV320U04N4B | 13.640.000 |
| 0.55 0.75 | 2.8 | 2.2 | 5 | ATV320U06N4B | 14.476.000 |
| 0.75 1 | 3.6 | 2.7 | 5 | ATV320U07N4B | 14.613.500 |
| 1.1 1.5 | 5 | 3.8 | 5 | ATV320U11N4B | 14.690.500 |
| 1.5 2 | 6.5 | 4.9 | 5 | ATV320U15N4B | 14.828.000 |
| 2.2 3 | 8.7 | 6.6 | 5 | ATV320U22N4B | 15.224.000 |
| 3 4 | 11.1 | 8.4 | 5 | ATV320U30N4B | 15.845.500 |
| 4 5 | 13.7 | 10.5 | 5 | ATV320U40N4B | 16.835.500 |
| 5.5 7.5 | 20.7 | 14.5 | 5 | ATV320U55N4B | 22.374.000 |
| 7.5 10 | 26.5 | 18.7 | 22 | ATV320U75N4B | 23.408.000 |
| 11 15 | 36.6 | 25.6 | 22 | ATV320D11N4B | 31.113.500 |
| 15 20 | 47.3 | 33.3 | 22 | ATV320D15N4B | 34.683.000 |

- (1) These values are given for a nominal switching frequency of 4 kHz, for use in continuous operation. The switching frequency is adjustable from 2 to 16 kHz. Above 4 kHz, derate the nominal drive current. The nominal motor current should not exceed this value
 (2) Typical value for a 4-pole motor and a maximum switching frequency of 4 kHz, with no line choke for max. prospective line Isc (4).
 (3) Nominal supply voltage, min. U1, max. U2: 200 (U1)...240 V(U2), 380 (U1)...500 V(U2)
 (4) If line Isc is greater than the values in the table, add line chokes.
 (5) Drives supplied with category C2 integrated EMC filter. This filter can be disconnected.
 (6) Connection in compliance with EMC standards:
 - ATV320...M2B, ATV320U04N4B... ATV320U40N4B drives are supplied with an EMC plate. This is integral part of the power terminal, these 2 components cannot be separated.
 - ATV320U55N4B...D15N4B drives are supplied with an EMC plate, for assembly by the customer.

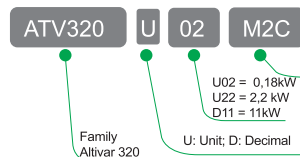
External options:

- Braking resistors
- Line chokes
- Motor chokes
- Additional EMC filters
- Speed monitoring module

Optional communication modules:

- Modbus/TCP- Ethernet/IP
- PROFIBUS DP V1
- DeviceNet
- EtherCAT
- POWERLINK
- ProfiNet

Part number explanation



- *M2 = Single phase 200...240V - EMC filters - 0,18 to 2,2 kW - 0,25 to 3HP
- *N4 = 3 phase 380...500V - EMC filters - 0,37 to 15 kW - 0,5 to 20 HP
- *M3 = 3 phase 200...240V - EMC filters - 0,18 to 15 kW - 0,25 to 20 HP
- *C = ComPact control block and ComPact format "C" (5.5kW up to 15kW only book control block)
- *B = book control block and book format "B" (5.5kW up to 15kW only book control block)



ATV320U02M2B...U07M2B
 ATV320U04N4B...U15N4B



ATV320U11M2B...U22M2B
 ATV320U22N4B...U40N4B



ATV320U55N4B



ATV320D15N4B



VW3A7608R...
 Braking resistors,
 enclosed model (IP 65 casing) with cordset



VW3A3620 - Speed monitoring module



VW3A3616 - Modbus TCP and EtherNet/IP

Control of three-phase asynchronous, synchronous and special motors from 0.75 to 22 kW
 Output frequency: 0.1... 599 Hz
 Overload torque performance up to 180% /220% Tn in an open loop or close loop control
 Motor sensor (RS422 incremental, Sincos) integration up to 22kW.
 Other motor sensors are as option - Digital (RS422 incremental, Endat2.2, SSI), Analog (sin/cos 1Vpp), Resolver 22kW.
 Numerous application functions and embedded safety functions for targeted high performance machines: Material handling, Packaging, Textiles, Hoisting, Material working,...

Điều khiển động cơ 3 pha loại đồng bộ, không đồng bộ và các loại động cơ đặc biệt khác công suất từ 0.75 đến 22 kW
 Tần số ngõ ra: 0.1... 599 Hz
 Khả năng quá tải lên đến 180% /220% momen định mức khi điều khiển vòng hở hoặc vòng kín
 Tích hợp sẵn cảm biến động cơ (RS422 Incremental, Sincos) với công suất đến 22kW. Tùy chọn phụ kiện cảm biến động cơ - Digital (RS422 incremental, Endat2.2, SSI), Analog (sin/cos 1Vpp), Resolver
 Nhiều chức năng ứng dụng và tích hợp sẵn các chức năng an toàn cho các máy phức tạp: vận chuyển vật liệu, đóng gói, máy dệt, cầu trục, máy chế biến vật liệu...

Unit price (incl.VAT) in VND

Drives with Modular drive (1)

| Motor | | Line supply | | | Altivar Machine ATV340 | | | Reference (1) | Unit price |
|---|-----|---------------------------------------|------------------------------|----------------------------------|------------------------------------|-------------------------------------|------|---------------|------------|
| Power indicated on rating plate motor (2) HD: Heavy Duty (5)kW ND: Normal Duty (4) kW HP | | Input current (3) 380V 480V A A | Pros- pective line Isc kA | Max. continuous current (2) A | Max. transient current for 2s A | Max. transient current for 60s A | | | |
| Three-phase supply voltage: 380...480 V 50/60 Hz | | | | | | | | | |
| HD 0.75 | 1 | 3.4 | 2.6 | 5 | 2.2 | 4 | 3.3 | ATV340U07N4 | 26.724.500 |
| ND 1.1 | 1.5 | 3.3 | 2.6 | 5 | 2.8 | 3.8 | 3.1 | | |
| HD 1.5 | 2 | 6 | 4.9 | 5 | 4 | 7.2 | 6 | ATV340U15N4 | 26.944.500 |
| ND 2.2 | 3 | 5.7 | 4.6 | 5 | 5.6 | 7.6 | 6.2 | | |
| HD 2.2 | 3 | 8.4 | 6.6 | 5 | 5.6 | 10.1 | 8.4 | ATV340U22N4 | 27.109.500 |
| ND 3 | 3 | 7.7 | 6.2 | 5 | 7.2 | 9.7 | 7.9 | | |
| HD 3 | 3 | 10.7 | 8.5 | 5 | 7.2 | 13 | 10.8 | ATV340U30N4 | 29.150.000 |
| ND 4 | 5 | 10.1 | 8.1 | 5 | 9.3 | 12.6 | 10.2 | | |
| HD 4 | 5 | 13.4 | 10.6 | 5 | 9.3 | 16.7 | 14 | ATV340U40N4 | 29.441.500 |
| ND 5.5 | 7 | 13.4 | 10.8 | 5 | 12.7 | 17.1 | 14 | | |
| HD 5.5 | 7 | 20 | 16 | 22 | 12.7 | 22.9 | 19.1 | ATV340U55N4 | 31.399.500 |
| ND 7.5 | 10 | 18 | 14.5 | 22 | 16.5 | 22.3 | 18.2 | | |
| HD 7.5 | 10 | 25.6 | 20.4 | 22 | 16.5 | 29.7 | 24.8 | ATV340U75N4 | 32.296.000 |
| ND 11 | 15 | 25.5 | 20.5 | 22 | 24 | 32.4 | 26.4 | | |
| HD 11 | 15 | 34.7 | 27.7 | 22 | 24 | 43 | 36 | ATV340D11N4 | 46.194.500 |
| ND 15 | 20 | 34 | 27.3 | 22 | 32 | 43 | 35.2 | | |
| HD 15 | 20 | 44.9 | 35.7 | 22 | 32 | 58 | 48 | ATV340D15N4 | 47.795.000 |
| ND 18.5 | 25 | 42.3 | 34 | 22 | 39 | 53 | 42.9 | | |
| HD 18.5 | 25 | 54.7 | 43.4 | 22 | 39 | 70 | 59 | ATV340D18N4 | 55.121.000 |
| ND 22 | 30 | 50 | 40.2 | 22 | 46 | 62 | 50.6 | | |
| HD 22 | 30 | 63.5 | 50.6 | 22 | 46 | 83 | 69 | ATV340D22N4 | 56.265.000 |
| ND 30 | 40 | 67.7 | 54.3 | 22 | 62 | 84 | 68.2 | | |



ATV340U22N4



ATV340U75N4



ATV340D22N4

(1) Altivar Machine ATV340...N4 drives integrate EMC filter category C3 with 20 m/65.62 ft shielded motor cable.
 (2) These values are gen for a nominal switching frequency of 4 kHz up to ATV340D22NAE, for use in continuous operation. The switching frequency is adjustable. Above 4 kHz, the drive will automatically reduce the switching frequency in the event of an excessive temperature rise. For continuous operation above the nominal switching frequency, derate the nominal drive current (see derating curves on our website www.schneider-electric.com).
 (3) Typical value for the indicated motor power and for the prospective line Isc.
 (4) Values given for applications requiring sight overload (up to 135% for 2 s and 110% for 60 s).
 (8) Values given for applications requiring significant overload (up to 180% for 2 s and 150% for 60 s).

(* Please contact Schneider Electric for price request

Control of three-phase asynchronous, synchronous and special motors from 0.75 to 75 kW
 Output frequency: 0.1... 599 Hz
 Overload torque performance up to 180%/ 220% Tn in an open loop or close loop control
 Motor sensor (RS422 incremental, SincoS) integration up to 22kW.
 Other motor sensors are as option - Digital (RS422 incremental, Endat2.2, SSI), Analog (sinicos 1Vpp), Resolver
 Integrated Ethernet IP and Modbus TCP dual port, cyber security (Achilles Level 2)
 Via integrated web server continuous and realtime application data with customizable dashboards
 Master/Slave drive-to-drive link via Ethernet
 Numerous application functions and embedded safety functions for targeted high performance machines: Material handling, Packaging, Textiles, Hoisting, Material working,...

Điều khiển động cơ 3 pha loại đồng bộ, không đồng bộ và các loại động cơ đặc biệt khác công suất từ 0.75 đến 75 kW
 Tần số ngõ ra: 0.1... 599 Hz -
 Khả năng quá tải lên đến 180% /220% momen định mức khi điều khiển vòng hở hoặc vòng kín
 Tích hợp sẵn cảm biến động cơ (RS422 incremental, SincoS) với công suất đến 22kW. Tùy chọn phụ kiện cảm biến động cơ - Digital (RS422 incremental, Endat 2, SSI), Analog (sin/cos 1Vpp), Resolver
 Tích hợp sẵn cổng truyền thông kép Ethernet IP/ Modbus TCP theo tiêu chuẩn cyber security (Achilles Level 2)
 Chức năng Web server dữ liệu theo thời gian thực.
 Điều khiển Chủ/Tớ dựa trên kết nối Biến tần- Biến tần thông qua cổng Ethernet
 Nhiều chức năng ứng dụng và tích hợp sẵn các chức năng an toàn cho các máy phức tạp: vận chuyển vật liệu, đóng gói, máy dệt, cầu trục, máy chế biến vật liệu,...

Unit price (incl.VAT) in VND

Drives with Ethernet drive (1)

| Motor | Line supply | | | Altivar Machine ATV340 | | | Reference (1) | Unit price |
|--|-------------------|----------------------|----|-----------------------------|-------------------------------|--------------------------------|---------------|-------------|
| | Input current (3) | Prospective line Isc | | Max. continuous current (2) | Max. transient current for 2s | Max. transient current for 60s | | |
| Power indicated on rating plate motor (2) HD: Heavy Duty (5)kW ND: Normal Duty (4) kW HP | 380V A | 480V A | kA | A | A | A | | |
| Three-phase supply voltage: 380...480 V 50/60 Hz | | | | | | | | |
| HD 0.75 1 | 3.4 | 2.6 | 5 | 2.2 | 4 | 3.3 | ATV340U07N4E | 28.952.000 |
| ND 1.1 1.5 | 3.3 | 2.6 | 5 | 2.8 | 3.8 | 3.1 | | |
| HD 1.5 2 | 6 | 4.9 | 5 | 4 | 7.2 | 6 | ATV340U15N4E | 30.926.500 |
| ND 2.2 3 | 5.7 | 4.6 | 5 | 5.6 | 7.6 | 6.2 | | |
| HD 2.2 3 | 8.4 | 6.6 | 5 | 5.6 | 10.1 | 8.4 | ATV340U22N4E | 31.086.000 |
| ND 3 3 | 7.7 | 6.2 | 5 | 7.2 | 9.7 | 7.9 | | |
| HD 3 3 | 10.7 | 8.5 | 5 | 7.2 | 13 | 10.8 | ATV340U30N4E | 33.044.000 |
| ND 4 5 | 10.1 | 8.1 | 5 | 9.3 | 12.6 | 10.2 | | |
| HD 4 5 | 13.4 | 10.6 | 5 | 9.3 | 16.7 | 14 | ATV340U40N4E | 33.874.500 |
| ND 5.5 7 | 13.4 | 10.8 | 5 | 12.7 | 17.1 | 14 | | |
| HD 5.5 7 | 20 | 16 | 22 | 12.7 | 22.9 | 19.1 | ATV340U55N4E | 34.309.000 |
| ND 7.5 10 | 18 | 14.5 | 22 | 16.5 | 22.3 | 18.2 | | |
| HD 7.5 10 | 25.6 | 20.4 | 22 | 16.5 | 29.7 | 24.8 | ATV340U75N4E | 39.704.500 |
| ND 11 15 | 25.5 | 20.5 | 22 | 24 | 32.4 | 26.4 | | |
| HD 11 15 | 34.7 | 27.7 | 22 | 24 | 43 | 36 | ATV340D11N4E | 49.076.500 |
| ND 15 20 | 34 | 27.3 | 22 | 32 | 43 | 35.2 | | |
| HD 15 20 | 44.9 | 35.7 | 22 | 32 | 58 | 48 | ATV340D15N4E | 52.156.500 |
| ND 18.5 25 | 42.3 | 34 | 22 | 39 | 53 | 42.9 | | |
| HD 18.5 25 | 54.7 | 43.4 | 22 | 39 | 70 | 59 | ATV340D18N4E | 61.182.000 |
| ND 22 30 | 50 | 40.2 | 22 | 46 | 62 | 50.6 | | |
| HD 22 30 | 63.5 | 50.6 | 22 | 46 | 83 | 69 | ATV340D22N4E | 62.584.500 |
| ND 30 40 | 67.7 | 54.3 | 22 | 62 | 84 | 68.2 | | |
| HD 30 40 | 54.8 | 48.3 | 50 | 61.5 | 92.25 | 92.25 | ATV340D30N4E | 88.709.500 |
| ND 37 50 | 66.2 | 57.3 | 50 | 74.5 | 89.4 | 89.4 | | |
| HD 37 50 | 67.1 | 59 | 50 | 74.5 | 111.75 | 111.75 | ATV340D37N4E | 93.505.500 |
| ND 45 60 | 78.9 | 69.1 | 50 | 88 | 105.6 | 105.6 | | |
| HD 45 60 | 81.4 | 71.8 | 50 | 88 | 132 | 132 | ATV340D45N4E | 141.993.500 |
| ND 55 75 | 97.2 | 84.2 | 50 | 106 | 127.2 | 127.2 | | |
| HD 55 75 | 98.9 | 86.9 | 50 | 106 | 159 | 159 | ATV340D55N4E | 150.997.000 |
| ND 75 100 | 131.3 | 112.7 | 50 | 145 | 174 | 174 | | |
| HD 75 100 | 134.3 | 118.1 | 50 | 145 | 217.5 | 217.5 | ATV340D75N4E | 158.922.500 |
| ND 90 125 | 156.2 | 135.8 | 50 | 173 | 207.6 | 207.6 | | |



ATV340U22N4E



ATV340U75N4E



ATV340D22N4E



ATV340D37N4E

For asynchronous motors from 0.75kW to 75kW
 Application: ventilation, pump, fan in HVAC system
 Integrated "C-less" technology for harmonic filter
 Protection index: IP21, IP55
 With or without EMC filter, PI regulator, energy saving functions...

Dùng cho mô tơ không đồng bộ từ 0.75kW đến 75kW
 Ứng dụng: thông gió, bơm, quạt trong hệ thống HVAC
 Tích hợp công nghệ "C-less" để triệt tiêu sóng hài
 Mức độ bảo vệ: IP21, IP55
 Bộ lọc EMC tích hợp hoặc rời, hiệu chỉnh PI, chức năng tiết kiệm năng lượng ...

Unit price (incl.VAT) in VND

3-phase supply voltage 200...240V and 380...480V, 50/60Hz, UL type 1/IP21 and IP55 Drives



| Motor Power indicated on plate (1) | kW | HP | IP21 200...240V | | IP21 380...480V | | IP55 380...480V | |
|------------------------------------|-----|---------------|---------------------------|--------------|---------------------------|--------------|---------------------------|------------|
| | | | External Filter in option | | Integrated class A filter | | Integrated class A filter | |
| | | | Reference | Unit Price | Reference | Unit Price | Reference | Unit Price |
| 0.75 | 1 | ATV212H075M3X | 15.235.000 | ATV212H075N4 | 15.119.500 | ATV212W075N4 | 23.705.000 | |
| 1.5 | 2 | ATV212HU15M3X | 16.731.000 | ATV212HU15N4 | 17.017.000 | ATV212WU15N4 | 22.830.500 | |
| 2.2 | 3 | ATV212HU22M3X | 17.836.500 | ATV212HU22N4 | 16.643.000 | ATV212WU22N4 | 25.102.000 | |
| 3 | - | ATV212HU30M3X | 22.726.000 | ATV212HU30N4 | 20.135.500 | ATV212WU30N4 | 28.611.000 | |
| 4 | 5 | ATV212HU40M3X | 25.410.000 | ATV212HU40N4 | 20.619.500 | ATV212WU40N4 | 30.327.000 | |
| 5.5 | 7.5 | ATV212HU55M3X | 35.062.500 | ATV212HU55N4 | 21.543.500 | ATV212WU55N4 | 36.850.000 | |
| 7.5 | 10 | ATV212HU75M3X | 39.033.500 | ATV212HU75N4 | 31.306.000 | ATV212WU75N4 | 45.078.000 | |
| 11 | 15 | ATV212HD11M3X | 65.153.000 | ATV212HD11N4 | 32.791.000 | ATV212WD11N4 | 114.834.500 | |
| 15 | 20 | ATV212HD15M3X | 66.214.500 | ATV212HD15N4 | 46.530.000 | ATV212WD15N4 | 119.680.000 | |
| 18.5 | 25 | ATV212HD18M3X | 85.052.000 | ATV212HD18N4 | 46.717.000 | ATV212WD18N4 | 188.457.500 | |
| 22 | 30 | ATV212HD22M3X | 139.001.500 | ATV212HD22N4 | 74.723.000 | ATV212WD22N4 | 197.499.500 | |
| 30 | 40 | ATV212HD30M3X | 204.990.500 | ATV212HD30N4 | 76.626.000 | ATV212WD30N4 | 208.725.000 | |
| 37 | 50 | | | ATV212HD37N4 | 99.858.000 | ATV212WD37N4 | 213.922.500 | |
| 45 | 60 | | | ATV212HD45N4 | 102.866.500 | ATV212WD45N4 | 226.413.000 | |
| 55 | 75 | | | ATV212HD55N4 | 132.275.000 | ATV212WD55N4 | 243.325.500 | |
| 75 | 100 | | | ATV212HD75N4 | 138.176.500 | ATV212WD75N4 | 248.061.000 | |

(1): Maximum lengths for shielded cables connecting motors to drives for a switching frequency of 6 to 16 kHz

Over 30 functions dedicated to pumping applications as well as functions for fan and simple material handling applications.

Trên 30 chức năng cho các ứng dụng Bơm, Quạt và các ứng dụng đơn giản trong ngành xử lý vật liệu.

Unit price (incl.VAT) in VND

UL Type 1/IP 21, 3-phase supply voltage: 200...240VAC, 50/60Hz



ATV630U07M3

| Power indicated on rating plate motor (2) | | | Line current (3) | | Reference(1) | Unit Price |
|---|-----|------|------------------|-------|--------------|-------------|
| ND: Normal Duty (4) HD: Heavy Duty (5) | | | 200 V | 240 V | | |
| | HP | KW | A | A | | |
| ND | 1 | 0,75 | 3 | 2,6 | ATV630U07M3 | 39.721.000 |
| HD | 0,5 | 0,4 | 1,7 | 1,5 | | |
| ND | 2 | 1,5 | 5,9 | 5 | ATV630U15M3 | 41.035.500 |
| HD | 1 | 0,8 | 3,3 | 3 | | |
| ND | 3 | 2,2 | 8,4 | 7,2 | ATV630U22M3 | 44.671.000 |
| HD | 2 | 1,5 | 6 | 5,3 | | |
| ND | - | 3 | 11,5 | 9,9 | ATV630U30M3 | 46.167.000 |
| HD | 3 | 2,2 | 8,7 | 7,6 | | |
| ND | 5 | 4 | 15,1 | 12,9 | ATV630U40M3 | 47.641.000 |
| HD | - | 3 | 11,7 | 10,2 | | |
| ND | 7,5 | 5,5 | 20,2 | 17,1 | ATV630U55M3 | 51.595.500 |
| HD | 5 | 4 | 15,1 | 13 | | |
| ND | 10 | 7,5 | 27,1 | 22,8 | ATV630U75M3 | 67.908.500 |
| HD | 7,5 | 5,5 | 20,2 | 17,1 | | |
| ND | 15 | 11 | 39,3 | 32,9 | ATV630D11M3 | 74.965.000 |
| HD | 10 | 7,5 | 27,2 | 23,1 | | |
| ND | 20 | 15 | 52,6 | 45,5 | ATV630D15M3 | 89.556.500 |
| HD | 15 | 11 | 40,1 | 34,3 | | |
| ND | 25 | 18,5 | 66,7 | 54,5 | ATV630D18M3 | 94.380.000 |
| HD | 20 | 15 | 53,1 | 44,9 | | |
| ND | 30 | 22 | 76 | 64,3 | ATV630D22M3 | 95.386.500 |
| HD | 25 | 18,5 | 64,8 | 54,5 | | |
| ND | 40 | 30 | 104,7 | 88,6 | ATV630D30M3 | 144.705.000 |
| HD | 30 | 22 | 78,3 | 67,1 | | |
| ND | 50 | 37 | 128 | 107,8 | ATV630D37M3 | 156.211.000 |
| HD | 40 | 30 | 104,7 | 88,6 | | |
| ND | 60 | 45 | 155,1 | 130,4 | ATV630D45M3 | 179.685.000 |
| HD | 50 | 37 | 128,5 | 108,5 | | |
| ND | 75 | 55 | 189 | 161 | ATV630D55M3 | 244.106.500 |
| HD | 60 | 45 | 156 | 134 | | |
| ND | 100 | 75 | 256 | 215 | ATV630D75M3 | 238.480.000 |
| HD | 75 | 55 | 189 | 161 | | |

(* Please contact Schneider Electric distributor for price request

(1) Altivar Process ATV630D11M3...D45M3 drives have been designed without an EMC filter. An additional filter can be added to help meet more stringent requirements and reduce electromagnetic emissions.

(2) These values are given for a nominal switching frequency of 4 kHz up to ATV630D22M3, or 2.5 kHz for ATV630D30M3...D45M3 for use in continuous operation.

The switching frequency is adjustable from 1... 16 kHz for all ratings.

Above 2.5 or 4 kHz (depending on the rating), the drive will automatically reduce the switching frequency in the event of an excessive temperature rise.

For continuous operation above the nominal switching frequency, derate the nominal drive current (see the derating curves on our website www.schneider-electric.com).

(3) Typical value for the indicated motor power and for the maximum prospective line Isc.

(4) Normal duty applications requiring an overload up to 110% for 60 seconds. Also known as variable torque loads

(5) Heavy duty applications requiring an overload up to 150% for 60 seconds. Also known as constant torque loads.

Part number explanation

Power Range (kW)

U●● = 0.1x●● (U75 0.1 x 75 = 7.5 kW)

D●● = 1x ●● (D75 = 1 x 75 = 76 kW)

C●● = 10x ●● (C75 = 10 x 75 = 750 kW)

Supply Voltage

M3 = 200 - 240V 3P

N4 = 380 - 480V 3P

Product Family
Altivar 630
product family

ATV630

U●●
D●●
C●●

M3
N4

Over 30 functions dedicated to pumping applications as well as functions for fan and simple material handling applications.

Trên 30 chức năng cho các ứng dụng Bơm, Quạt và các ứng dụng đơn giản trong ngành xử lý vật liệu.

Unit price (incl.VAT) in VND

UL Type 1/IP 21, 3-phase supply voltage: 200...240VAC, 50/60Hz



ATV630D15N4



ATV630D55N4



ATV630C11N4

| | Power indicated on rating plate motor (1) | | Line current (3) | | Reference(1) | Unit Price |
|---------------------|---|------|------------------|-------|-----------------|-------------------|
| | HP | KW | 380 V | 480 V | | |
| ND: Normal Duty (3) | | | | | | |
| HD: Heavy Duty (4) | | | | | | |
| | HP | KW | A | A | | |
| ND | 1 | 0.75 | 1.5 | 1.3 | ATV630U07N4 | 39.858.500 |
| HD | 0.5 | 0.37 | 0.9 | 0.8 | | |
| ND | 2 | 1.5 | 3 | 2.6 | ATV630U15N4 | 40.106.000 |
| HD | 1 | 0.75 | 1.7 | 1.5 | | |
| ND | 3 | 2.2 | 4.3 | 3.8 | ATV630U22N4 | 40.804.500 |
| HD | 2 | 1.5 | 3.1 | 2.9 | | |
| ND | - | 3 | 5.8 | 5.1 | ATV630U30N4 | 41.316.000 |
| HD | 3 | 2.2 | 4.5 | 4 | | |
| ND | 5 | 4 | 7.6 | 6.7 | ATV630U40N4 | 41.503.000 |
| HD | - | 3 | 6 | 5.4 | | |
| ND | 7.5 | 5.5 | 10.4 | 9.1 | ATV630U55N4 | 41.816.500 |
| HD | 5 | 4 | 8 | 7.2 | | |
| ND | 10 | 7.5 | 13.8 | 11.9 | ATV630U75N4 | 47.767.500 |
| HD | 7.5 | 5.5 | 10.5 | 9.2 | | |
| ND | 15 | 11 | 19.8 | 17 | ATV630D11N4 | 49.621.000 |
| HD | 10 | 7.5 | 14.1 | 12.5 | | |
| ND | 20 | 15 | 27 | 23.3 | ATV630D15N4 | 67.408.000 |
| HD | 15 | 11 | 20.6 | 18.1 | | |
| ND | 25 | 18.5 | 33.4 | 28.9 | ATV630D18N4 | 68.876.500 |
| HD | 20 | 15 | 27.7 | 24.4 | | |
| ND | 30 | 22 | 39.6 | 34.4 | ATV630D22N4 | 71.907.000 |
| HD | 25 | 18.5 | 34.1 | 29.9 | | |
| ND | 40 | 30 | 53.3 | 45.9 | ATV630D30N4 | 90.359.500 |
| HD | 30 | 22 | 40.5 | 35.8 | | |
| ND | 50 | 37 | 66.2 | 57.3 | ATV630D37N4 | 92.911.500 |
| HD | 40 | 30 | 54.8 | 48.3 | | |
| ND | 60 | 45 | 79.8 | 69.1 | ATV630D45N4 | 97.377.500 |
| HD | 50 | 37 | 67.1 | 59.0 | | |
| ND | 75 | 55 | 97.2 | 84.2 | ATV630D55N4 | 138.314.000 |
| HD | 60 | 45 | 81.4 | 71.8 | | |
| ND | 100 | 75 | 131.3 | 112.7 | ATV630D75N4 | 145.310.000 |
| HD | 75 | 55 | 98.9 | 86.9 | | |
| ND | 125 | 90 | 156.2 | 135.8 | ATV630D90N4 | 174.141.000 |
| HD | 100 | 75 | 134.3 | 118.1 | | |
| ND | 150 | 110 | 201 | 165 | ATV630C11N4(5) | Contact for price |
| HD | 125 | 90 | 170 | 143 | | |
| ND | 200 | 132 | 237 | 213 | ATV630C13N4(5) | Contact for price |
| HD | 150 | 110 | 201 | 165 | | |
| ND | 250 | 160 | 284 | 262 | ATV630C16N4(5) | Contact for price |
| HD | 200 | 132 | 237 | 213 | | |
| ND | 350 | 220 | 397 | 324 | ATV630C22N4 (5) | Contact for price |
| HD | 250 | 160 | 296 | 246 | | |
| ND | 400 | 250 | 451 | 366 | ATV630C25N4 (5) | Contact for price |
| HD | 350 | 220 | 365 | 301 | | |
| ND | 500 | 315 | 569 | 461 | ATV630C31N4 (5) | Contact for price |
| HD | 400 | 250 | 457 | 375 | | |

(*) Please contact Schneider Electric distributor for price request

(1) These values are given for a nominal switching frequency of 4 kHz up to ATV630D45N4, or 2.5 kHz for ATV630D55N4...D90N4 for use in continuous operation. The switching frequency is adjustable from 1...16 kHz for all ratings.

Above 2.5 or 4 kHz (depending on the rating), the drive will automatically reduce the switching frequency in the event of an excessive temperature rise.

For continuous operation above the nominal switching frequency, derate the nominal drive current (see the derating curves on our website www.schneiderelectric.com).

(2) Typical value for the indicated motor power and for the maximum prospective line Isc.

(3) Normal duty applications requiring overload up to 110% for 60 seconds. Also known as variable torque loads.

(4) Heavy duty application requiring an overload up to 150% for 60 seconds. Also known as constant torque loads.

(5) Product supplied as IP 00 for mounting in an enclosure. For IP 21/UL Type 1 wall mounting, order separately the kit for IP21/UL Type 1 conformity VW3A9704.

Over 30 functions dedicated to pumping applications as well as functions for fan and simple material handling applications.

Trên 30 chức năng cho các ứng dụng Bơm, Quạt và các ứng dụng đơn giản trong ngành xử lý vật liệu.

Unit price (incl.VAT) in VND

**IP 21, category C3 integrated EMC filter - Floor standing (60
3-phase supply voltage: 380...440VAC, 50/60Hz**



ATV630C16N4F

| Power indicated on rating plate motor (1) | | | Line current (2) | | Reference(1) | Unit Price |
|---|----|-----|------------------|-------|--------------|-------------|
| ND: Normal Duty (3) | | | 380 V | 480 V | | |
| HD: Heavy Duty (4) | | | | | | |
| | HP | KW | A | A | | |
| ND | - | 110 | 207 | 195 | ATV630C11N4F | 521.427.500 |
| HD | - | 90 | 174 | 164 | | |
| ND | - | 132 | 250 | 232 | ATV630C13N4F | 539.506.000 |
| HD | - | 110 | 207 | 197 | | |
| ND | - | 160 | 291 | 277 | ATV630C16N4F | 552.018.500 |
| HD | - | 132 | 244 | 232 | | |
| ND | - | 200 | 369 | 349 | ATV630C20N4F | 896.599.000 |
| HD | - | 160 | 302 | 286 | | |
| ND | - | 250 | 453 | 432 | ATV630C25N4F | 944.273.000 |
| HD | - | 200 | 369 | 353 | | |
| ND | - | 315 | 566 | 538 | ATV630C31N4F | 920.293.000 |
| HD | - | 250 | 453 | 432 | | |

(*) Please contact Schneider Electric distributor for price request

(1) These values are given for a nominal switching frequency of 4 kHz up to ATVB30D45N4, or 2.5 kHz for ATVB30D5S8NA4...D90N4 for use in continuous operation.

The switching frequency is adjustable from 1... 16 kHz for all ratings.

Above 2.8 or 4 kHz (depending on the rating), the drive will automatically reduce the switching frequency in the event of an excessive temperature rise. For continuous operation above the nominal switching frequency, derate the nominal drive current (see the derating curves on our website www.schneiderelectric.com).

(2) Typical value for the indicated motor power and for the maximum prospective line Isc.

(3) Normal duty applications requiring an overload up to 110% for 60 seconds. Also known as variable torque loads.

(4) Heavy duty applications requiring an overload up to 180% for 60 seconds. Also known as constant torque loads.

(6) Integrated motor chokes allowing a shielded motor cable length up to 300 m/984 ft in category C3 and an unshielded cable length up to 450 m/1476 ft in category C4.

Variable Speed Drives

Speed and Torque control.
Drive to Drive connection.
Master/Slave and load sharing.
STO SIL 3 embedded and Safety Basic.
Better performance with all the motors.
Independent of the brand.
Integrated Modbus TCP & EtherNet IP,
Modbus serial link.

Altivar Process ATV900- Heavy and high performance applications

Điều khiển tốc độ và momen.
Chức năng kết nối Biến tần với Biến tần.
Chức năng Master/Slave và chia tải.
Tích hợp sẵn chức năng bảo vệ STO SIL 3 và các chức năng bảo vệ cơ bản khác.
Có khả năng điều khiển với các loại động cơ khác nhau.
Tích hợp sẵn cổng truyền thông Modbus TCP & EtherNet IP,
Modbus serial link.



ATV930D11M3



ATV930D30M3

Unit price (incl.VAT) in VND

UL Type 1/IP 21, 3-phase supply voltage: 200...240VAC, 50/60Hz

| Power indicated on rating plate motor (2) | Line current (3) | | Reference(1) | Unit Price | | |
|---|------------------|-------|--------------|------------|-------------|-------------|
| | 200 V | | | | | |
| | 200 V | 240 V | | | | |
| ND: Normal Duty (4) | | | | | | |
| HD: Heavy Duty (5) | | | | | | |
| | HP | KW | A | A | | |
| ND | 1 | 0.75 | 3 | 2.6 | ATV930U07M3 | 55.066.000 |
| HD | 0,5 | 0,4 | 1.7 | 1.5 | | |
| ND | 2 | 1.5 | 5.9 | 5 | ATV930U15M3 | 56.815.000 |
| HD | 1 | 0.8 | 3.3 | 3 | | |
| ND | 3 | 2.2 | 8.4 | 7.2 | ATV930U22M3 | 57.128.500 |
| HD | 2 | 1.5 | 6 | 5.3 | | |
| ND | - | 3 | 11.5 | 9.9 | ATV930U30M3 | 59.015.000 |
| HD | 3 | 2.2 | 8.7 | 7.6 | | |
| ND | 5 | 4 | 15.1 | 12.9 | ATV930U40M3 | 61.457.000 |
| HD | - | 3 | 11.7 | 10.2 | | |
| ND | 7.5 | 5.5 | 20.2 | 17.1 | ATV930U55M3 | 65.208.000 |
| HD | 5 | 4 | 15.1 | 13 | | |
| ND | 10 | 7.5 | 27.1 | 22.6 | ATV930U75M3 | 72.567.000 |
| HD | 7.5 | 5.5 | 20.1 | 16.9 | | |
| ND | 15 | 11 | 39.3 | 32.9 | ATV930D11M3 | 75.427.000 |
| HD | 10 | 7.5 | 27.2 | 23.1 | | |
| ND | 20 | 15 | 52.6 | 45.5 | ATV930D15M3 | 93.764.000 |
| HD | 15 | 11 | 40.1 | 34.3 | | |
| ND | 25 | 18.5 | 66.7 | 54.5 | ATV930D18M3 | 99.330.000 |
| HD | 20 | 15 | 53.1 | 44.9 | | |
| ND | 30 | 22 | 76 | 64.3 | ATV930D22M3 | 109.268.500 |
| HD | 25 | 18.5 | 64.8 | 54.5 | | |
| ND | 40 | 30 | 104.7 | 88.6 | ATV930D30M3 | 157.679.500 |
| HD | 30 | 22 | 78.3 | 67.1 | | |
| ND | 50 | 37 | 128 | 107.8 | ATV930D37M3 | 159.621.000 |
| HD | 40 | 30 | 104.7 | 88.6 | | |
| ND | 60 | 45 | 155.1 | 130.4 | ATV930D45M3 | 200.590.500 |
| HD | 50 | 37 | 128.5 | 108.5 | | |

UL Type 1/IP 21, without braking unit, 3-phase supply voltage: 200...240VAC, 50/60Hz

| Power indicated on rating plate motor (2) | Line current (3) | | Reference(1) | Unit Price | | |
|---|------------------|-------|--------------|------------|------------------|-------------------|
| | 200 V | | | | | |
| | 200 V | 240 V | | | | |
| ND: Normal Duty (4) | | | | | | |
| HD: Heavy Duty (5) | | | | | | |
| | HP | KW | A | A | | |
| ND | 40 | 30 | 104.7 | 88.6 | ATV930D30M3C | 141.949.500 |
| HD | 30 | 22 | 78.3 | 67.1 | | |
| ND | 50 | 37 | 128 | 107.6 | ATV930D37M3C | 158.383.500 |
| HD | 40 | 30 | 104.7 | 88.6 | | |
| ND | 60 | 45 | 155.1 | 130.4 | ATV930D45M3C | 168.426.500 |
| HD | 50 | 37 | 128.5 | 108.5 | | |
| ND | 75 | 55 | 189 | 161 | ATV930D55M3C (6) | Contact for price |
| HD | 60 | 45 | 156 | 134 | | |
| ND | 100 | 75 | 256 | 215 | ATV930D75M3C (6) | Contact for price |
| HD | 75 | 55 | 189 | 161 | | |

Speed and Torque control.
 Drive to Drive connection.
 Master/Slave and load sharing.
 STO SIL 3 embedded and Safety Basic.
 Excellent performance on all kinds of motors.
 Integrated Modbus TCP & EtherNet IP, Modbus serial link.

Điều khiển tốc độ và momen.
 Chức năng kết nối Biến tần với Biến tần.
 Chức năng Master/Slave và chia tải.
 Tích hợp sẵn chức năng bảo vệ STO SIL 3 và các chức năng bảo vệ cơ bản khác.
 Có khả năng điều khiển với các loại động cơ khác nhau.
 Tích hợp sẵn cổng truyền thông Modbus TCP & EtherNet IP, Modbus serial link

Unit price (incl.VAT) in VND

UL Type 1/IP 21, 3-phase supply voltage: 380...480VAC, 50/60Hz



ATV630D15N4



ATV930D30N4



ATV930D55N4

| Power indicated on rating plate motor (2) | | | Line current (3) | | Reference(1) | Unit Price |
|---|-----|------|------------------|-------|-----------------|-------------------|
| ND: Normal Duty (4) HD: Heavy Duty (5) | | | 380 V | 480 V | | |
| | HP | KW | A | A | | |
| ND | 1 | 0.75 | 1.5 | 1.3 | ATV930U07N4 | 48.807.000 |
| HD | 0,5 | 0.37 | 0.9 | 0.8 | | |
| ND | 2 | 1.5 | 3 | 2.6 | ATV930U15N4 | 45.606.000 |
| HD | 1 | 0.75 | 1.7 | 1.5 | | |
| ND | 3 | 2.2 | 4.3 | 3.8 | ATV930U22N4 | 46.260.500 |
| HD | 2 | 1.5 | 3.1 | 2.9 | | |
| ND | - | 3 | 5.8 | 5.1 | ATV930U30N4 | 47.003.000 |
| HD | 3 | 2.2 | 4.5 | 4 | | |
| ND | 5 | 4 | 7.6 | 6.7 | ATV930U40N4 | 47.828.000 |
| HD | - | 3 | 6 | 5.4 | | |
| ND | 7,5 | 5.5 | 10.4 | 9.1 | ATV930U55N4 | 49.142.500 |
| HD | 5 | 4 | 8 | 7.2 | | |
| ND | 10 | 7.5 | 13.8 | 11.9 | ATV930U75N4 | 55.341.000 |
| HD | 7,5 | 5.5 | 10.5 | 9.2 | | |
| ND | 15 | 11 | 19.8 | 17 | ATV930D11N4 | 61.099.500 |
| HD | 10 | 7.5 | 14.1 | 12.5 | | |
| ND | 20 | 15 | 27 | 23.3 | ATV930D15N4 | 73.656.000 |
| HD | 15 | 11 | 20.6 | 18.1 | | |
| ND | 25 | 18.5 | 33.4 | 28.9 | ATV930D18N4 | 76.714.000 |
| HD | 20 | 15 | 27.7 | 24.4 | | |
| ND | 30 | 22 | 39.6 | 34.4 | ATV930D22N4 | 82.021.500 |
| HD | 25 | 18.5 | 34.1 | 29.9 | | |
| ND | 40 | 30 | 53.3 | 45.9 | ATV930D30N4 | 98.202.500 |
| HD | 30 | 22 | 40.5 | 35.8 | | |
| ND | 50 | 37 | 66.2 | 57.3 | ATV930D37N4 | 118.904.500 |
| HD | 40 | 30 | 54.8 | 48.3 | | |
| ND | 60 | 45 | 79.8 | 69.1 | ATV930D45N4 | 126.192.000 |
| HD | 50 | 37 | 67.1 | 59.0 | | |
| ND | 75 | 55 | 97.2 | 84.2 | ATV930D55N4 | 161.078.500 |
| HD | 60 | 45 | 81.4 | 71.8 | | |
| ND | 100 | 75 | 131.3 | 112.7 | ATV930D75N4 | 170.956.500 |
| HD | 75 | 55 | 98.9 | 86.9 | | |
| ND | 125 | 90 | 156.2 | 135.8 | ATV930D90N4 | 185.300.500 |
| HD | 100 | 75 | 134.3 | 118.1 | | |
| ND | 350 | 220 | 397 | 324 | ATV930C22N4 (6) | Contact for price |
| HD | 250 | 160 | 296 | 246 | | |

(1) Category C2 EMC filter for ATV930U07N4...D45N4. Category C3 EMC filter above ATV930D45N4.

(2) These values are given for an adjustable nominal switching frequency of 4 kHz for ATV930U07N4...ATV930D45N4 or 2.5 kHz for ATV930D55N4...D90N4, for use in continuous operation.

Above 2.5 or 4 kHz (depending on the rating), the drive will automatically reduce the switching frequency in the event of an excessive temperature rise. For continuous operation above the nominal switching frequency, derate the nominal drive current (see debating curves on our website www.schneider-electric.com).

(3) Typical value for the indicated motor power and for the prospective line Isc.

(4) Values given for applications requiring a slight overload (up to 120%).

(5) Values given for applications requiring a significant overload (up to 150%).

(6) Product supplied as IP 00 for mounting in an enclosure. For IP 21/UL Type 1 wall mounting, a conformity kit should be ordered separately.

Speed and Torque control.
 Drive to Drive connection.
 Master/Slave and load sharing.
 STO SIL 3 embedded and Safety Basic.
 Excellent performance on all kinds of motors.
 Integrated Modbus TCP & EtherNet IP, Modbus serial link.

Điều khiển tốc độ và momen.
 Chức năng kết nối Biến tần với Biến tần.
 Chức năng Master/Slave và chia tải.
 Tích hợp sẵn chức năng bảo vệ STO SIL 3 và các chức năng bảo vệ cơ bản khác.
 Có khả năng điều khiển với các loại động cơ khác nhau.
 Tích hợp sẵn công truyền thông Modbus TCP & EtherNet IP, Modbus serial link

Unit price (incl.VAT) in VND



ATV930C11N4C



ATV930C16N4F

UL Type 1/IP 21, with category C2 or C3 integrated EMC filter without braking unit, 3-phase supply voltage: 380...480VAC, 50/60Hz

| Power indicated on rating plate motor (1) | | | Line current (2) | | Reference | Unit Price |
|---|-----|-----|------------------|-------|------------------|-------------------|
| ND: Normal Duty (3) | | | 380 V | 480 V | | |
| HD: Heavy Duty (4) | | | | | | |
| | HP | kW | A | A | | |
| ND | 75 | 55 | 97.2 | 84.2 | ATV930D55N4C | 162.277.500 |
| HD | 60 | 45 | 81.4 | 71.8 | | |
| ND | 100 | 75 | 131.3 | 112.7 | ATV930D75N4C | 166.886.500 |
| HD | 75 | 55 | 98.9 | 86.9 | | |
| ND | 125 | 90 | 156.2 | 135.8 | ATV930D90N4C | 180.724.500 |
| HD | 100 | 75 | 134.3 | 118.1 | | |
| ND | 150 | 110 | 201 | 165 | ATV930C11N4C (5) | Contact for price |
| HD | 125 | 90 | 170 | 143 | | |
| ND | 200 | 132 | 237 | 213 | ATV930C13N4C (5) | Contact for price |
| HD | 150 | 110 | 201 | 165 | | |
| ND | 250 | 160 | 284 | 262 | ATV930C16N4C (5) | Contact for price |
| HD | 200 | 132 | 237 | 213 | | |
| ND | 350 | 220 | 397 | 324 | ATV930C22N4C (5) | Contact for price |
| HD | 250 | 160 | 296 | 246 | | |
| ND | 400 | 250 | 451 | 366 | ATV930C25N4C (5) | Contact for price |
| HD | 300 | 200 | 365 | 301 | | |
| ND | 500 | 315 | 569 | 461 | ATV930C31N4C (5) | Contact for price |
| HD | 400 | 250 | 457 | 375 | | |

IP 21, with category C3 integrated EMC filter - Floor standing (6) 3-phase supply voltage: 380...440VAC, 50/60Hz

| Power indicated on rating plate motor (1) | | | Line current (2) | | Reference | Unit Price |
|---|----|-----|------------------|-------|--------------|---------------|
| ND: Normal Duty (3) | | | 380 V | 480 V | | |
| HD: Heavy Duty (4) | | | | | | |
| | HP | kW | A | A | | |
| ND | - | 110 | 207 | 195 | ATV930C11N4F | 616.957.000 |
| HD | - | 90 | 174 | 164 | | |
| ND | - | 132 | 250 | 232 | ATV930C13N4F | 629.348.500 |
| HD | - | 110 | 207 | 197 | | |
| ND | - | 160 | 291 | 277 | ATV930C16N4F | 663.718.000 |
| HD | - | 132 | 244 | 232 | | |
| ND | - | 200 | 369 | 349 | ATV930C20N4F | 926.981.000 |
| HD | - | 160 | 302 | 286 | | |
| ND | - | 250 | 453 | 432 | ATV930C25N4F | 938.855.500 |
| HD | - | 200 | 369 | 353 | | |
| ND | - | 315 | 566 | 538 | ATV930C31N4F | 1.091.502.500 |
| HD | - | 250 | 453 | 432 | | |

(* Please contact Schneider Electric distributor for price request

(1) These values are given for a nominal switching frequency of 2.8 kHz for use in continuous operation.

The switching frequency is adjustable for all ratings.

Above 2.5 kHz, the drive will automatically reduce the switching frequency in the event of an excessive temperature rise.

For continuous operation above the nominal switching frequency, derate the nominal drive current

(see derating curves on our website www.schneider-electric.com).

(2) Typical value for the indicated motor power and for the maximum prospective line Isc.

(3) Values given for applications requiring a slight overload (up to 120%).

(4) Values given for applications requiring a significant overload (up to 150%).

(5) The power part are accessible at the bottom of the drive. hence the product is supplied as IP 00

for mounting in an enclosure. For IP 21/UL Type 1 wall mounting, order the IP 21/UL Type 1 conformity kit VW3A9704 separately.

(6) Integrated motor chokes allowing a shielded motor cable length up to 300 m/984 ft in category C3 and an

unshielded cable length up to 450 m/1,476 ft in category C4.

(* Please consult our Customer Care Center

Numerous accessories and options to increase their functionality and also their capacity for integration and adaptation.

Các phụ kiện và tùy chọn nâng cao chức năng và khả năng việc tích hợp và tương thích với hệ thống

Unit price (incl.VAT) in VND



VW3A1111

| For remote mounting graphic display | | | |
|---|---------------|--------------|------------|
| Description | Length (m/ft) | Reference | Unit Price |
| Graphic display terminal (supplied with drive) | | VW3A1111 | 7.551.500 |
| Remote mounting kit | | | |
| Order with remote-mounting cordset VW3A1104R... | | VW3A1112 | 1.705.000 |
| Remote-mounting cordset equipped with 2 RJ45 connectors | 1/3.28 | VW3A1104R10 | 759.000 |
| | 3/9.84 | VW3A1104R30 | 869.000 |
| | 5/16.40 | VW3A1104R50 | 896.500 |
| | 10/32.81 | VW3A1104R100 | 1.221.000 |



VW3A1112

| I/O expansion cards | | |
|---|-----------|------------|
| Description | Reference | Unit Price |
| I/O expansion option card 6 logic inputs, 2 logic outputs, 1 analog input | VW3A3203 | 9.784.500 |
| Relay outputs card 3 Relay outputs with NO contacts | VW3A3204 | 7.975.000 |



VW3A3720

| Communication cards | | |
|---|-----------|------------|
| Description | Reference | Unit Price |
| CANopen daisy chain card w/ 2 RJ45 connectors | VW3A3608 | 4.334.000 |
| CANopen SUB-D card | VW3A3618 | 4.966.500 |
| EtherNet/IP and Modbus TCP dual port card | VW3A3720 | 19.255.500 |
| ProfiNet card w/ 2 RJ45 connectors | VW3A3627 | 13.018.500 |
| PROFIBUS DP V1 card | VW3A3607 | 8.569.000 |
| DeviceNet card | VW3A3609 | 26.372.500 |



VW3A3203

Other options (*):

- Passive filters
- Additional EMC input filters for reducing conducted emissions on the line
- Encoder interface modules
- Output filters:
 - + dv/dt filters
 - + Sinus filters

(*) Please consult our Customer Care Center

A regenerative function associated to ATV320, ATV340 and ATV930 drives.
An economic energy saving alternative to the braking resistor.

- Energy saving function.
- No particular set-up for the regenerative function.
- Easy mechanical integration.
- Robustness to mains perturbances.
- Modular

Bộ hãm tái sinh lắp đặt với biến tần ATV320, ATV340 và ATV930.
Là giải pháp tiết kiệm năng lượng thay thế cho Việc sử dụng điện trở hãm (xà)

- Tiết kiệm năng lượng.
- Không cần phải thực hiện các thao tác cài đặt các chức năng chuyên biệt cho chức năng hãm tái sinh
- Dễ dàng tích hợp vào phần cơ khí
- Vận hành bền bỉ khi nguồn ngõ vào bị nhiễu
- Thiết kế nhỏ gọn, dạng module



ATVRU75N4



ATVRD15N4

Unit price (incl.VAT) in VND

| References | | | |
|---|----|-----------|------------|
| For drives (1) | IP | Reference | Unit Price |
| Supply voltage: 380...480 V 50/60 Hz | | | |
| ATV320U07NA...D15N4. | 20 | ATVRU75N4 | 37.521.000 |
| ATV340U07...D22N4. | | | |
| ATV340D30...D75N4E | 20 | ATVRD15N4 | 37.455.000 |
| ATV930...N4/N4Z | | | |
| ATV980...N4 | | | |

(1) For sizing, refer to the **Altivar Regenerative Unit User Manual to select the Regenerative unit**
Download Altivar Regenerative Unit: Sizing Tool: <https://ww.se.com/ww/en/download/document/NVE94856/>